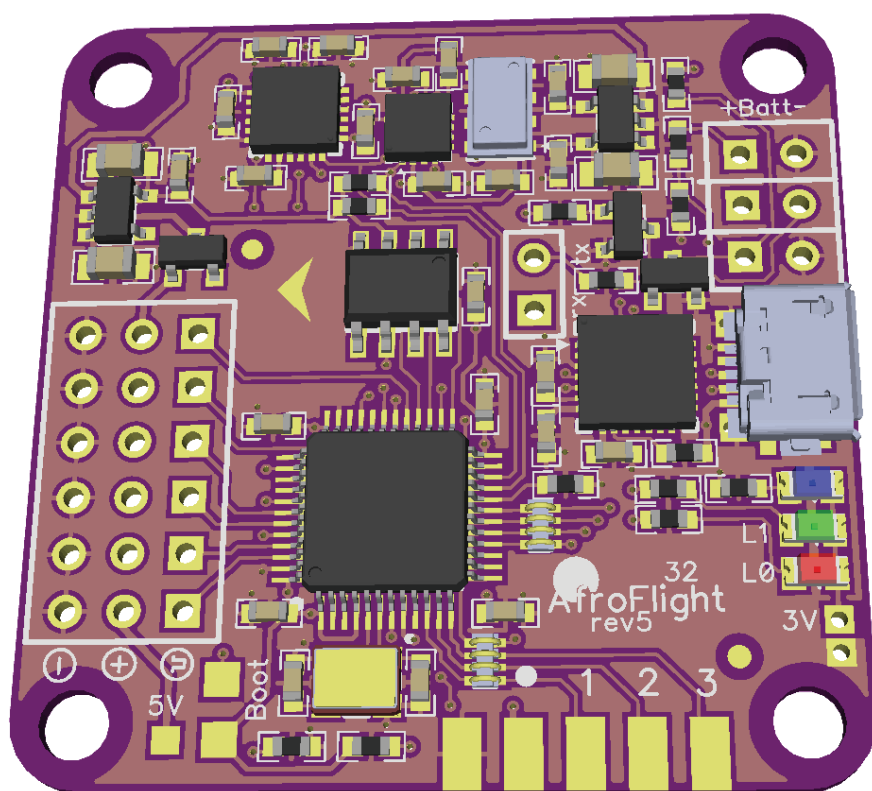


Flight Controller 「なぜ」 「Naze32」

Mini Fun Fly



Mini FunFly Flight Controller "Naze32" (なぜ) Introduction

Mini Flight Controller 「なぜ」 (pronounced 「Naze」)

36x36mm.

6 grams (no headers, 8 grams with).

Modern 32-bit ARM processor running at 3.3V/72MHz.

MEMS gyro, accelerometer, compass and pressure sensor.

Acrobatic, auto-level, heading hold, head-free, altitude hold flight mode.

Support Quad-, Tri-, Hex-, Octo-, various coaxial configurations, as well as fully customizable motor mixer for any airframe type.

Flexible RC input - Standard, CPPM (PPM Sum), Spektrum satellite.

Battery voltage monitoring and low voltage alarm.

Built-in FrSky telemetry converter.

Onboard Micro-USB for setup and configuration.

MultiWii-based configuration GUI.

Flying wing, airplane mixer. ⁽¹⁾

GPS position hold / return to home. ⁽¹⁾

Designed for use with small indoor or small to mid-sized outdoor multicopter craft, or as a standalone camera stabilizer, the Naze32 flight control is simple to setup, with configuration based on the familiar "MultiWii" software.


⁽¹⁾ Work in progress

WARNING Using this hardware with any DJI frames is not supported. This includes: FlameWheel 330, 450, 550, or any future or past frames released by DJI.

WARNING Do not use this hardware for serious business, commercial aerial photography, or anything else where its usage could endanger the end user, spectators, inanimate objects, aircraft flying overhead, etc.

NOTE While the flight controller firmware and configuration software is based on the MultiWii system, the processor is not Atmel AVR, and this hardware cannot be programmed through the Arduino development environment or any AVR development tools. For more information on STM32 development, see the following link:

<http://code.google.com/p/afrodevices/wiki/STM32Development>

NOTE This hardware is provided as-is and end-user is expected to have reasonable technical knowledge to complete set-up and reasonable R/C experience to operate
mu 

Mini FunFly Flight Controller "Naze32" (なぜ) Hardware and Connection (Top)

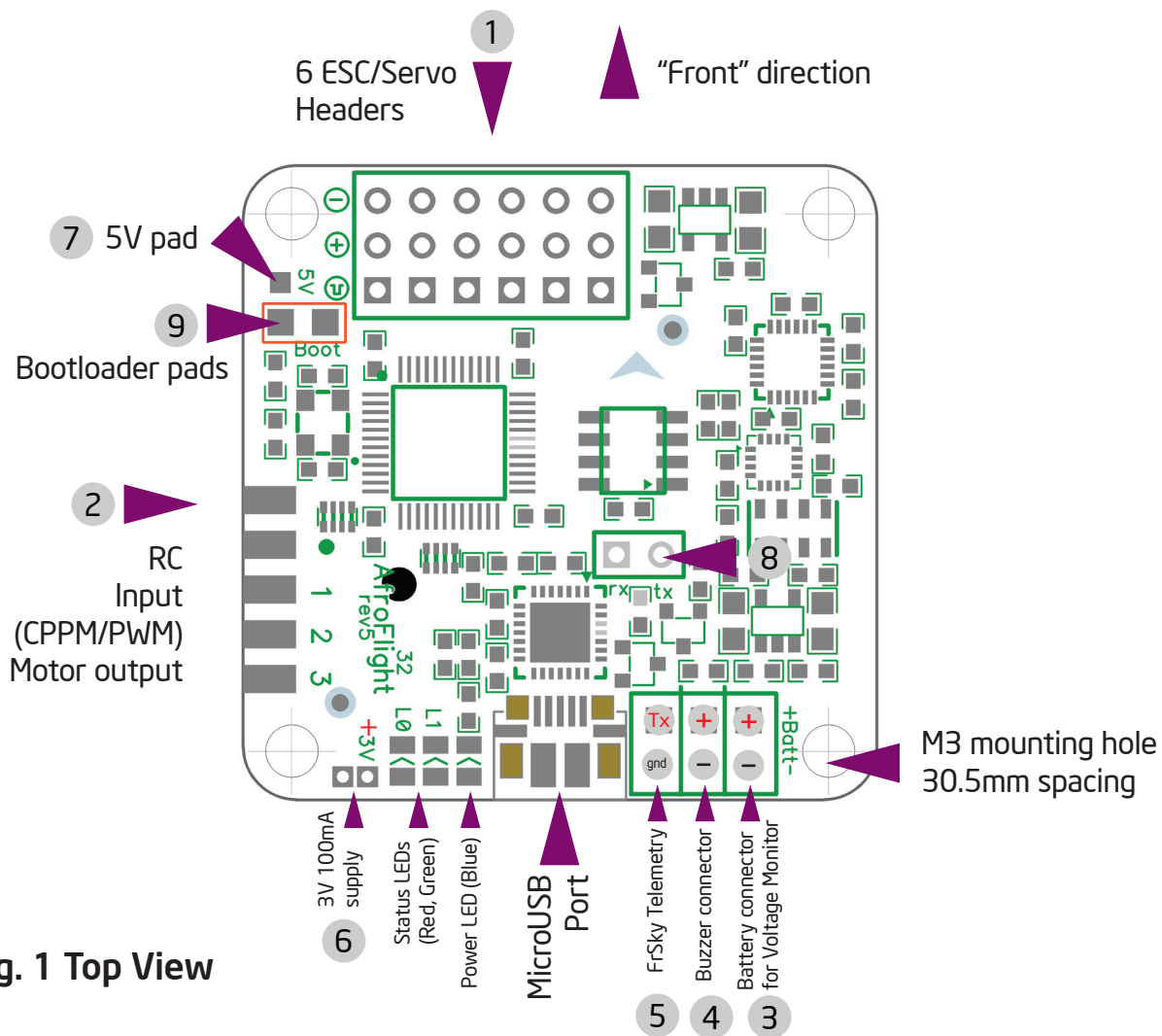


Fig. 1 Top View

Board is 36x36mm square, with mounting holes for M3 screws, spaced 30.5mm.

[1] ESC / Servo Headers

[2] RC Input / Servo Output (CPPM / PWM) / GPS connector

Described in detail in "Motor and Receiver connections" chapter.

[3] Optional Battery Voltage Monitor

To enable in-flight battery voltage monitoring and alarm, connect this header to flight battery or power distro board. Up to 25V (6S LiPo) can be measured. No reverse polarity protection - connecting battery in reverse will instantly destroy the hardware.

[4] Buzzer

5V Buzzer, connect a header here, + and - are marked and should be followed.

[5] FrSky Telemetry output port. Connect to 'RxD' on any telemetry-enabled FrSky Receiver (D8R, etc)


[6] 3.3V 100mA power output from MCU regulator. Use this to power low-power devices such as Spektrum Satellite or 3V Bluetooth module.

[7] 5V pad, which is connected to center pin on Servo/RC connector. Can be used to tap BEC power for 5V devices.

Pay close attention not to short this pad with nearby bootloader pins, as this will instantly destroy the hardware.

[8] Telemetry / Bluetooth / XBee serial port

RX and TX connectors from the USB Serial converter are available here. Can be used to connect Bluetooth / XBee / etc to allow changing settings without connecting USB.

[9]  update fails or for upgrading from older firmware. Use a paperclip or tweezers to short pads together and connect power to the board, then remove the short. Firmware update tool can then be used to reload firmware.

Mini FunFly Flight Controller "Naze32" (なぜ) Hardware and Connection (Bottom)

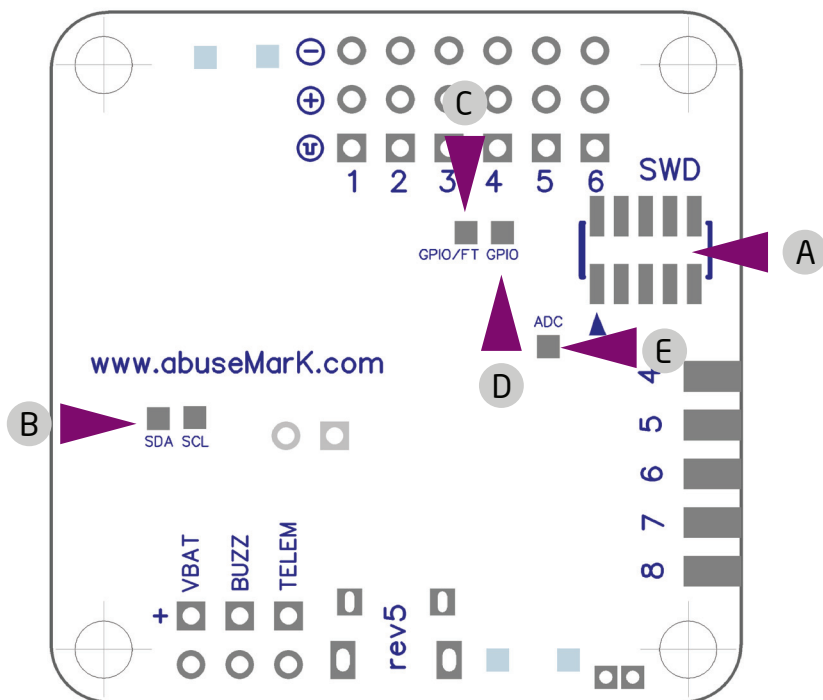


Fig. 2 Bottom View

[A] Cortex Debug Connector

10 pin 0.05" debug connector connected to 'SWD' port of STM32. Pin 1 is marked with a triangle. Connector pinout is standard: http://infocenter.arm.com/help/topic/com.arm.doc.faq/attached/13634/cortex_debug_connectors.pdf

[B] I2C Connector

SDA and SCL from the sensor I2C bus are connected here. Can be used for additional sensors or debugging. I2C bus runs at 3.3V only, do not connect 5V sensors here (such as I2C sonar, etc).

[C] **5V-tolerant** GPIO connected to PA15 on STM32. Can be used for sonar trigger or any other 5V I/O.

[D] **3.3V-tolerant** GPIO connected to PB5 on STM32. Cannot be connected to 5V levels as this will instantly destroy the hardware.

[E] **3.3V** ADC input connected to ADC12_IN5 on STM32. **Not 5V tolerant.**

Mini FunFly Flight Controller "Naze32" (なぜ) Motor and Receiver Connections

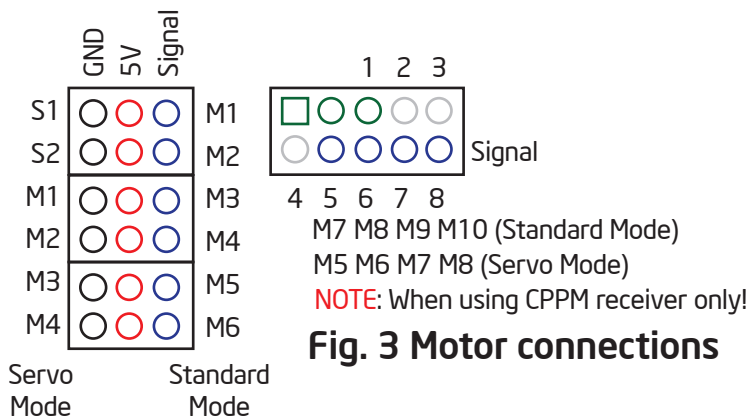


Fig. 3 Motor connections

Depending on selected motor configuration and receiver type, up to 10 motors or servos can be connected. Headers on top of the board ① can be used for 6 motors or 2 servos and 4 motors. The pins towards center of the board are signal pins. Following that is 5V, and then Ground/GND pins.

WARNING Incorrect or reverse connection to these pins will instantly destroy the hardware.

When CPPM receiver is used, RC input connector can be used for additional motor and servo outputs. Refer to the diagram in Fig. 3 Motor connections.

Some CLI configuration options affect motor and servo numbering, see the "Serial Console" chapter for more details.

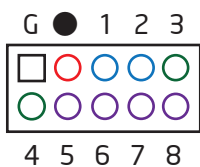


Fig. 4 Receiver connections

With the connector facing out, the pins are used as follows. Unmarked pin (left-most top side) is ground, pin marked with dot is 5V supply, the rest are RC signal pins for CPPM (channel 1) or channels 1 through 8. Standard female to female servo cable can be used to connect a CPPM receiver. Default channel order is AIL, ELE, THR, RUD, AUX1..AUX4. A breakout cable is provided for connection to standard receiver.

When GPS feature is enabled, channels 3 and 4 are used for 3.3V GPS connection. (3:TX, 4:RX). with CPPM receiver, these are normally unused, with standard receiver, connect AIL to 1, ELE to 2, THR to 5, RUD to 6, and AUX1/2 to channels 7 and 8.

With CPPM receiver, channels 5 to 8 can also be used as motor or servo outputs, depending on airframe type and configuration.

Mini FunFly Flight Controller "Naze32" (なぜ) Motor Mixer Settings

Images below show motor numbering and propeller rotation for various supported mixes. The number corresponds to the motor index (M1 to M8) from Fig 3. Motor connections.

NOTE Configurations with more than 6 motors require CPPM receiver.

In all cases, the "front" arrow on flight control board should point in same direction as red arrow in these illustrations. For Y4 and Y6 mixes, purple motors are top, and blue is bottom. In *servo mode* (Tri-/Bi-/Camera Stabilization), motor numbers change according to the diagrams below. When using CPPM receiver additional 4 motor outputs are available for Hexa- with gimbal, or Octo- configuration.

NOTE In Tri-copter mode, tail tilt servo connects to S1, and motors M1..M3 as shown in Fig 3. Motor connections on the previous page. When camera stabilization is enabled, gimbal pitch/roll servos connect to S1/S2, and motor connectors shift as well.

It's also possible to program a completely custom mix for up to 10 motors. For more details, see the "Serial Console" chapter.

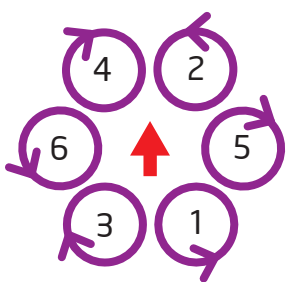


QuadCopter-X
(default)

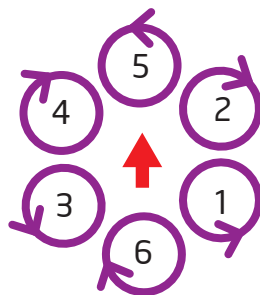
QuadCopter-Plus

TriCopter

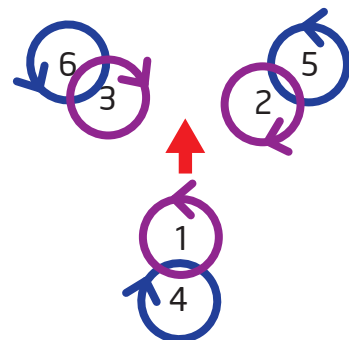
Y4



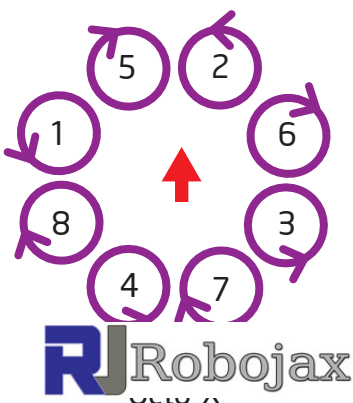
Hexa-X



Hexa-Plus



Y6



Custom Mix

Mini FunFly Flight Controller "Naze32" (なぜ) Camera Stabilization and Gimbal Mode

Naze32 can be used as a standalone camera gimbal stabilization unit. By setting multirotor type to "Standalone Gimbal Stabilization", servo outputs 1 and 2 can drive camera gimbal servos. Both analog (50Hz refresh) and digital (200Hz+ refresh) servos are supported. Servo gain (amount of servo travel for given angle of tilt) is configurable for both pitch and roll axis.

In addition to standalone stabilization, camera outputs can also be enabled when used as a standard multirotor controller. In case of standard receiver, this limits to Quad mixer. In case of CPPM receiver, up to Octo can be supported while still allowing for camera control. Channels AUX3/AUX4 can be assigned to tilt/roll the camera mount in addition to stabilization. See "Serial Console" chapter for more details.

NOTE Make sure the aircraft is level when powering up in standalone gimbal stabilization mode.

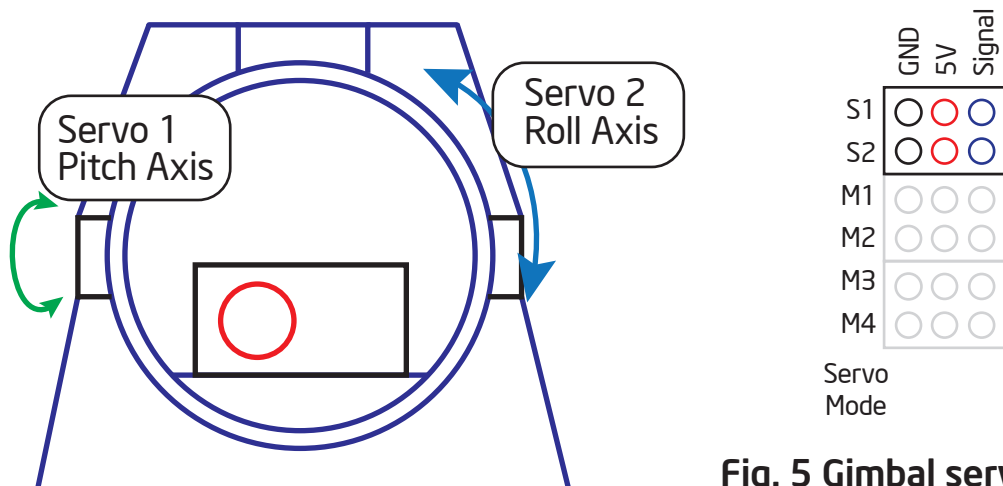


Fig. 5 Gimbal servo connections

WARNING If using high-current-draw servos for camera stabilization, consider powering them from a separate BEC. Only connect Signal and GND wire to the board, and 5V wire from servos to a separate power source.

Mini FunFly Flight Controller “Naze32” (なぜ) Firmware Upgrade part 1 (bootloader)

Hardware is shipped with the most current firmware at the time of assembly. It is recommended to upgrade to latest stable or development firmware for new features.

Update requires the following tools:

1. Flash Loader Demonstrator -

<http://code.google.com/p/afrodevices/downloads/list>

2. Hercules SETUP utility -

http://www.hw-group.com/products/hercules/index_en.html

3. Latest baseflight firmware (development)

<http://code.google.com/p/afrodevices/source/browse/trunk/baseflight/obj/baseflight.hex>

NOTE Hardware should be connected only by USB. Do not perform firmware update while flight battery is connected.

Entering bootloader mode

Method 1

1. Run Hercules SETUP and switch to “Serial” tab.
2. Choose COM port, baudrate of 115200, 8bit, no parity.
3. Click Open button.
4. In any 3 of the Send boxes, write in “R”.
5. Click the Send button.

 All 3 LEDs will be ON, indicating the hardware is in bootloader mode.

6. Proceed to ‘Firmware Update’ steps on next page.

Method 2

NOTE This is the rescue/recovery method. Under normal circumstances it should not be necessary.

1. Temporarily short the bootloader pads using tweezers or a paper clip. Do NOT solder them together.
2. While bootloader pads are still shorted, apply power.

 Only the POWER (blue) LED will be ON at this point.
 If any of the status LEDs blink, repeat from beginning.

3. After confirming that only POWER LED is ON, bootloader pads can now be unshorted.
4. Proceed to ‘Firmware Update’ steps on next page.

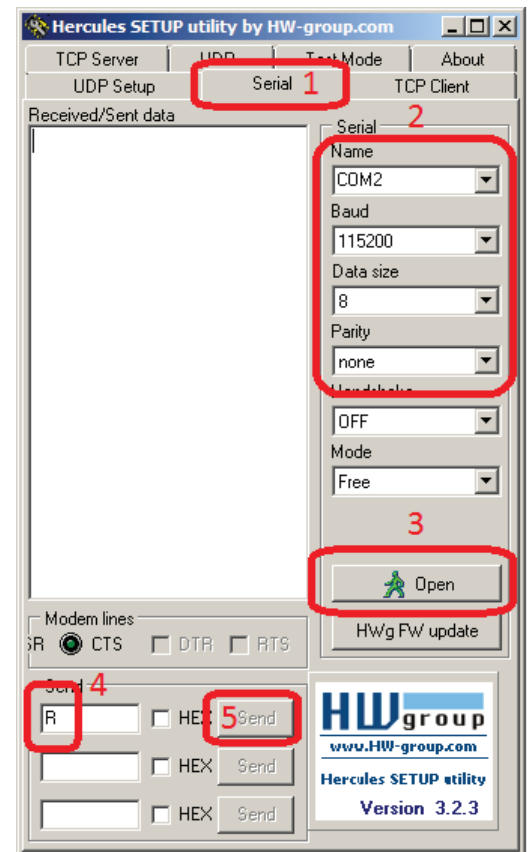


Fig. 6 Hercules SETUP

Mini FunFly Flight Controller “Naze32” (なぜ) Firmware Upgrade part 2 (actual update)

Once hardware is in bootloader mode (see previous page), Flash Loader Demonstrator can be used to flash the firmware.

Firmware update

1. Run Flash Loader Demonstrator
2. Choose COM port, baudrate of 115200, make sure parity is set to EVEN.
3. Click “Next” button several times. When asked to choose device size, if 128K is not selected, choose it.
4. On the last page (see Fig 7 Flash Loader), choose:
 - Download to device.
 - Browse to the location of .hex file to update.
 - Choose “Erase necessary pages” to keep settings (firmware may still clear them) or “Global Erase” to erase all settings and return to defaults.
 - Check “Jump to user program” checkbox.
 - Uncheck “Verify after download” checkbox.
5. Click the “Next” button.

After successful update, the board will reboot, flashing status LEDs in the usual pattern.

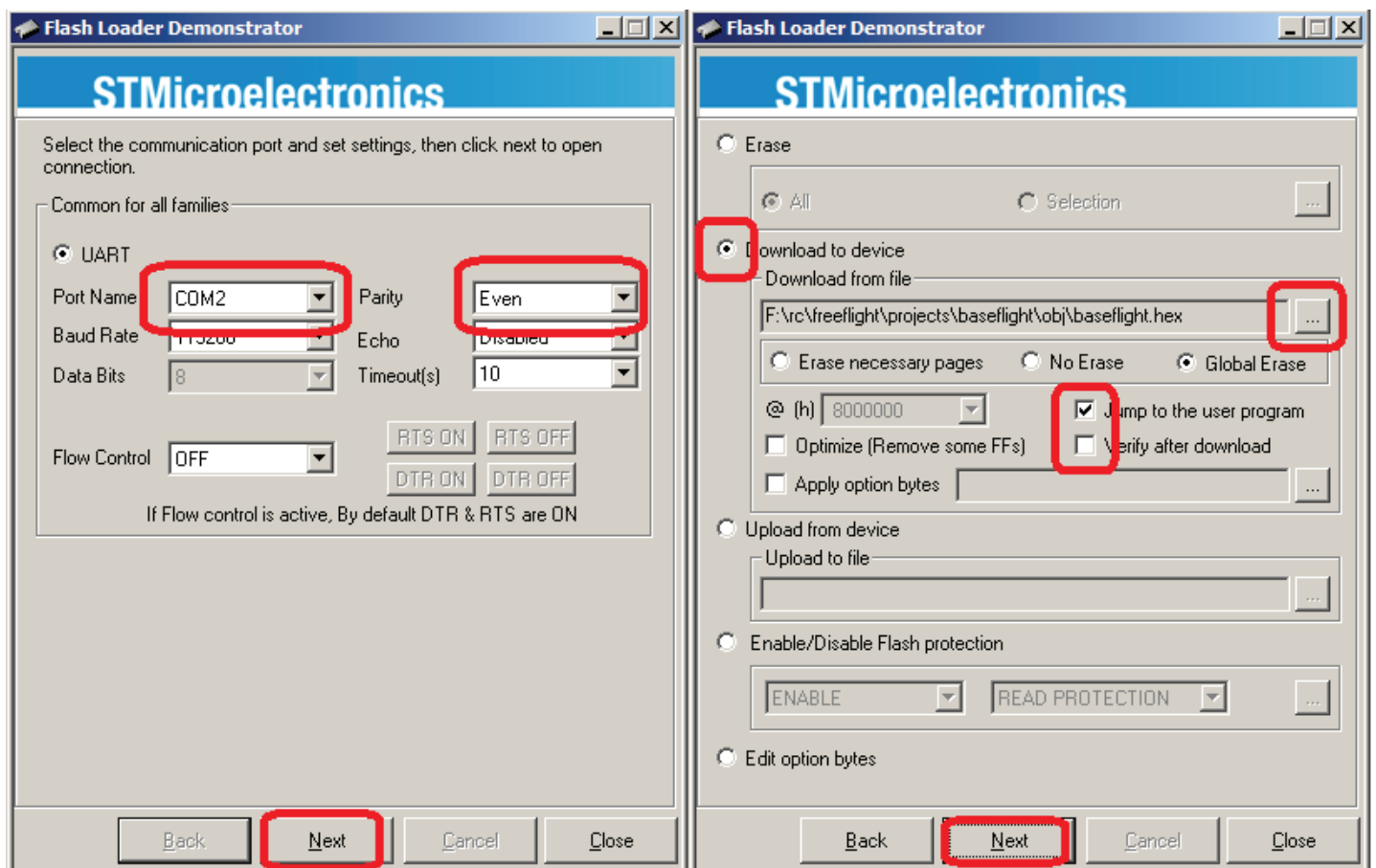


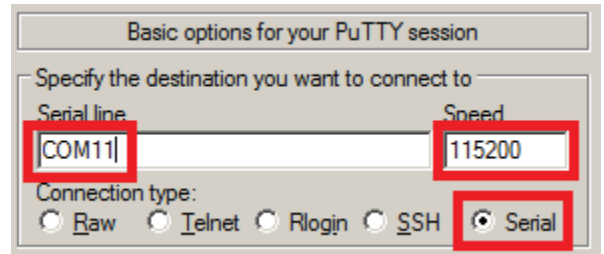
Fig. 7 Flash Loader Demonstrator

Mini FunFly Flight Controller "Naze32" (なぜ) Command Line Interface / configuration

Command Line Interface (hereafter CLI) is used to configure most functions of the board. A terminal program (such as PuTTY or HyperTerminal) should be used.

Download PuTTY from <http://www.chiark.greenend.org.uk/~sgtatham/putty/>

Connect to USB Serial port at 115200 baud, 8bit, no parity, 1 stop bit. These are default settings for most terminal programs. To enter CLI, type '#' into the terminal.



A message will be printed,
Entering CLI Mode, type 'exit' to return, or 'help'

Fig. 8 PuTTY Configuration

Command line is interactive, and most commands will print something in return.
Available commands:

help	print out a list of all commands with short description of each
defaults	reset all settings to built in defaults, and reboot
feature	enable, disable, or list enabled features (such as CPPM input, GPS, etc)
map	configure RC channel mapping for CPPM and standard receiver
cmix	create custom motor mix for non-standard airframe type
mixer	set or show current multirotor mixer (such as Quad-/Hexa-/etc)
set	set or list available parameters. Many settings are available.
status	print out system status (voltage, uptime, enabled sensors, etc)
version	print out firmware version and build date/time
save/exit	save settings and reboot

WARNING Any changes to settings in cli, in particular related to motor output (throttle values, etc) are accepted REALTIME and may result in motors starting up without warning. Always configure with props disconnected or when model is only powered by USB.

Common usage examples:

To enable CPPM receiver, enable PPM feature:

```
# feature ppm
# save
```

To disable battery voltage monitoring, disable VBAT feature:

```
# feature -vbat
# save
```

To enable camera stabilization and change mixer to Quad-Plus:

```
# mixer quadp
# feature servo_tilt
# save
```

To configure CPPM receiver for EATR channel order and swap AUX1/2:

```
# map EATR2134
#sa
```



Settings are applied real-time, however not saved until 'save' or 'exit' command is executed.

Mini FunFly Flight Controller "Naze32" (なぜ) Frequently forgotten things

Few things need to be done to ensure smooth flying experience. The guidelines below should cover most common setup issues.

Do not move the model while plugging in the battery and during the first few seconds after power-up. Gyro must be idle, or else initial calibration will be wrong. Alternatively, make sure to execute the "Gyro Calibration" stick sequence prior to arming.

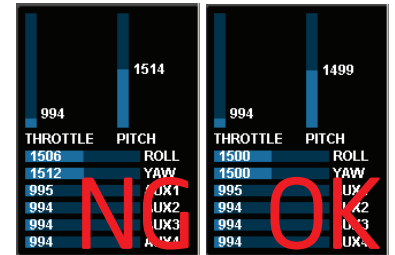


Fig. 9 Trim

First flight should always be in gyro-only mode. Do not enable auto-level, baro, headfree, etc until you know what you're doing.

If model immediately flips on take off, double-check board orientation (front facing), each motor number, rotation direction, and type of prop installed. Refer to "Motor Mixer" chapter for details.

Trim transmitter once, and never trim in-flight. Connect to GUI, and subtrim on transmitter until all channels are centered at 1500.

If using Futaba gear, center might be 1520. In that case, set `midrc` value in config to 1520, then subtrim to center all channels at 1520. Do not use trim in flight for either gyro or auto-level mode. Use acc-trim function.

Cover the barometer with open-cell foam and keep it away from direct sunlight. Placing the flight controller in a plastic enclosure of some kind is recommended.

Mini FunFly Flight Controller "Naze32" (なぜ) Stick Actions



Motor Arm



Motor Disarm



Gyro calibration



Acc calibration



Mag calibration



Acc trim

